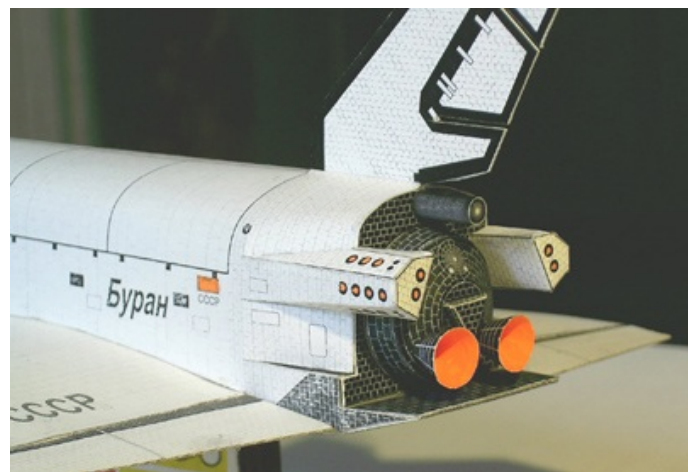
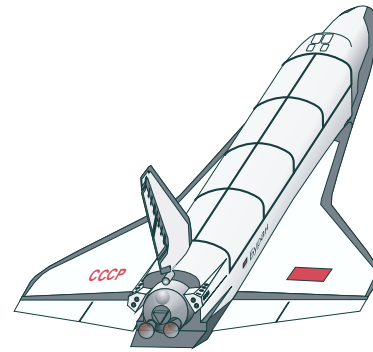


# Buran

1:96



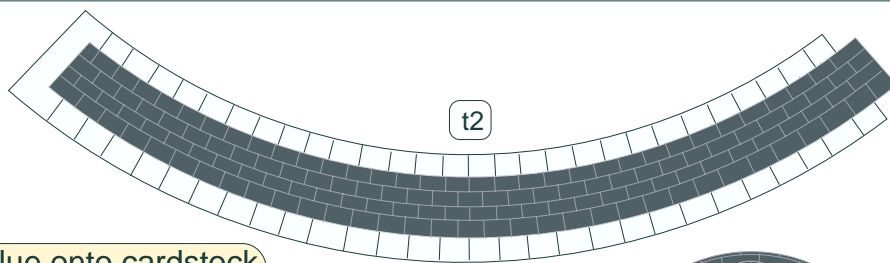


● ○ parachute container

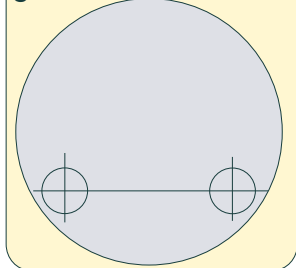
t7



tail



glue onto cardstock

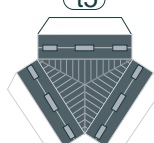


t2a

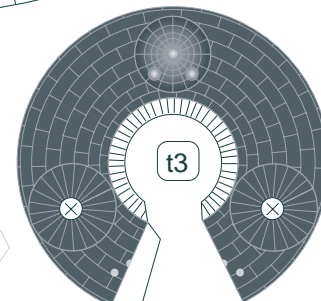
t4



t5

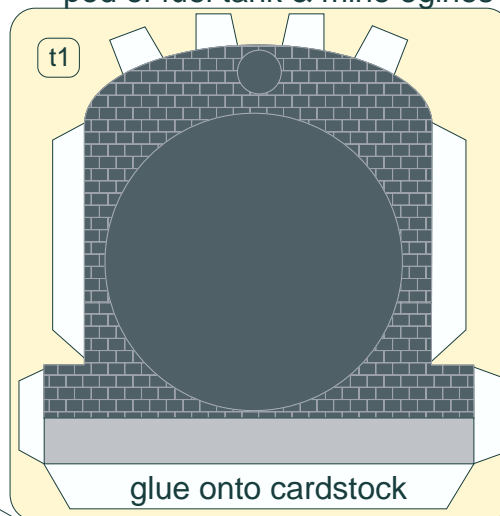


t3



pod of fuel tank & mine engines

t1

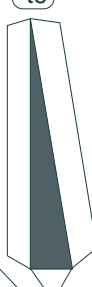


glue onto cardstock

t9

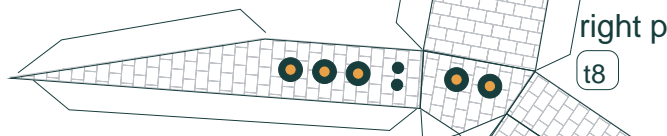


t9

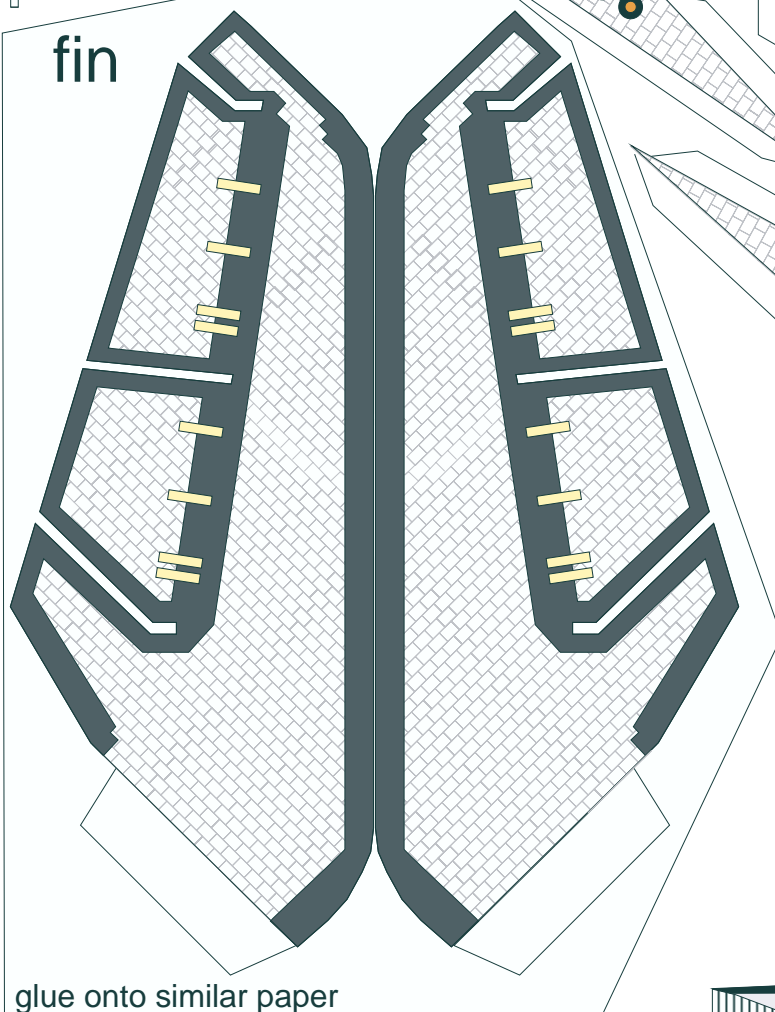


right pod

t8



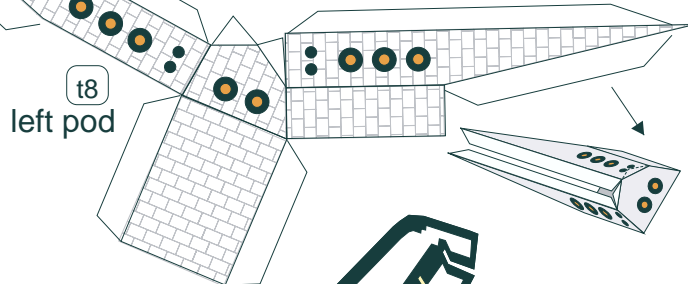
fin



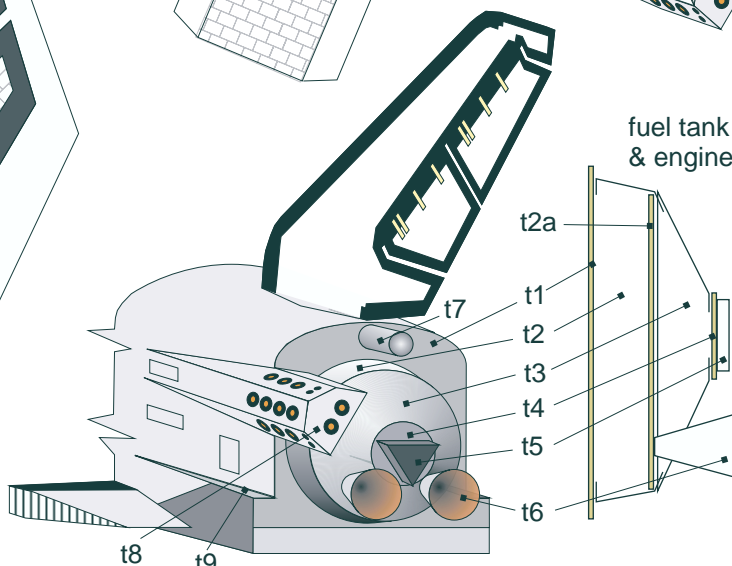
glue onto similar paper

left pod

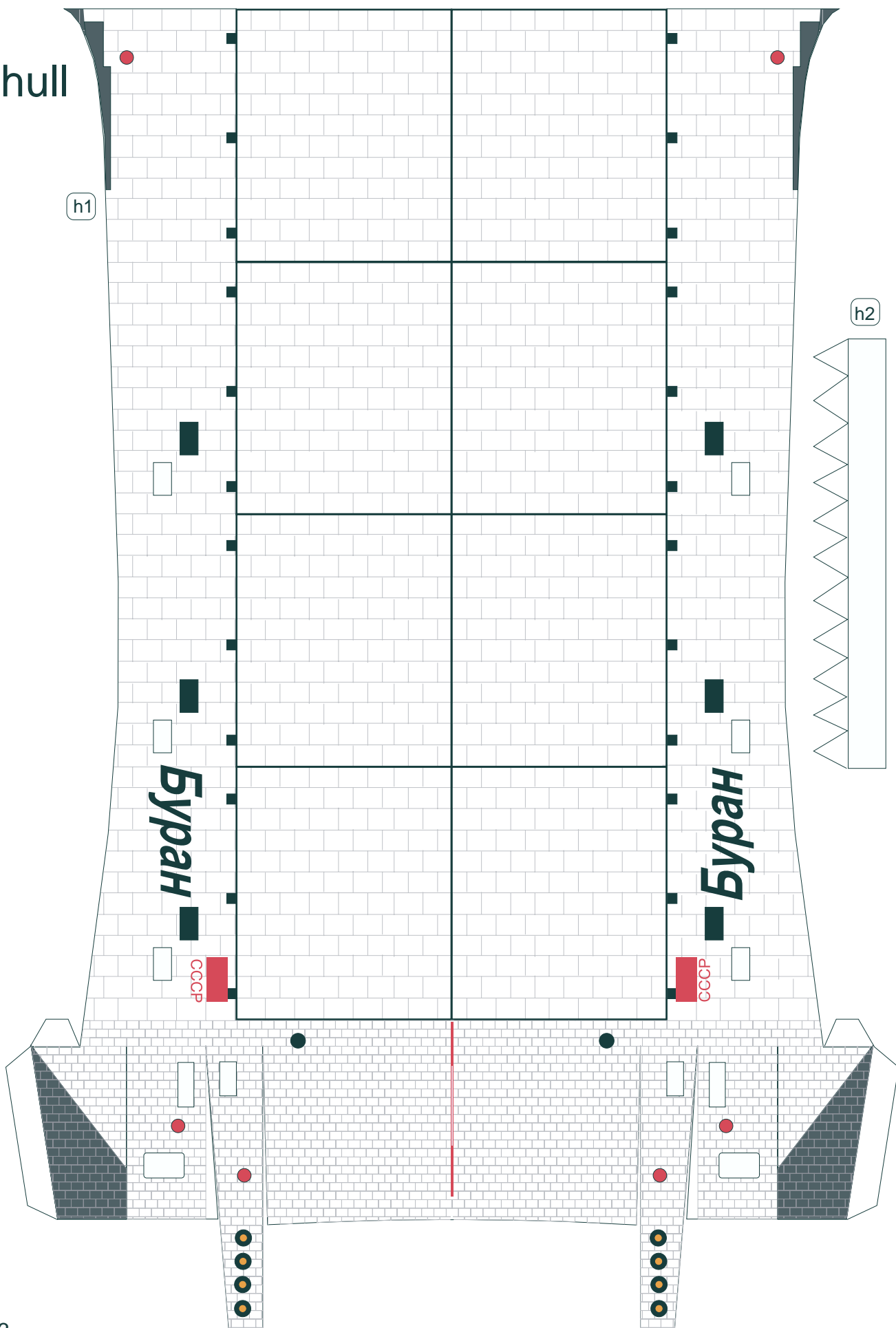
t8



fuel tank & engines



hull





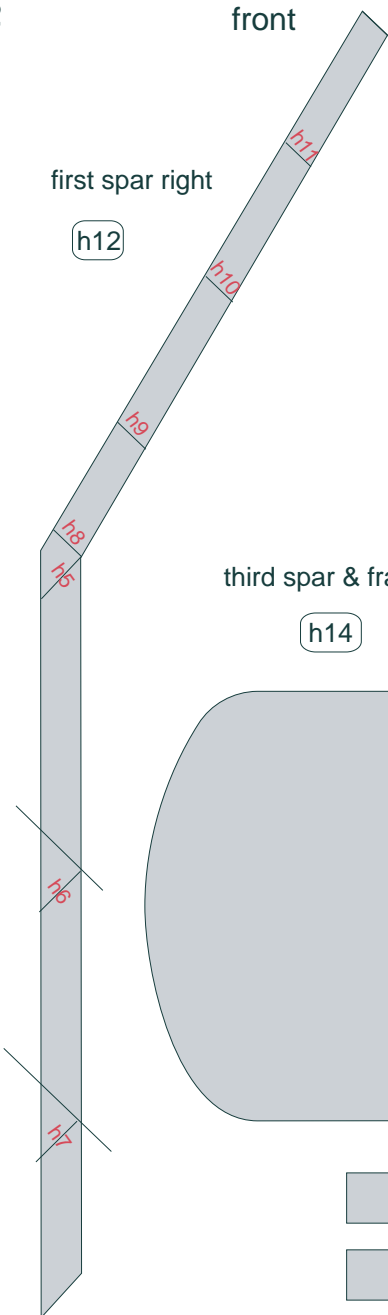
10 cm



front

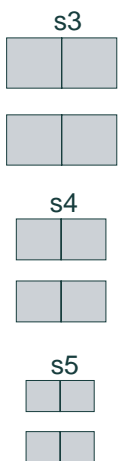
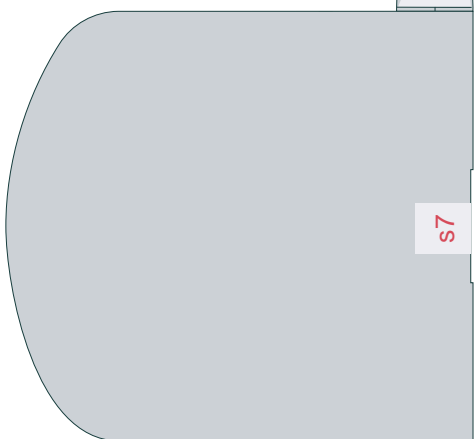
first spar right

h12



third spar & frame

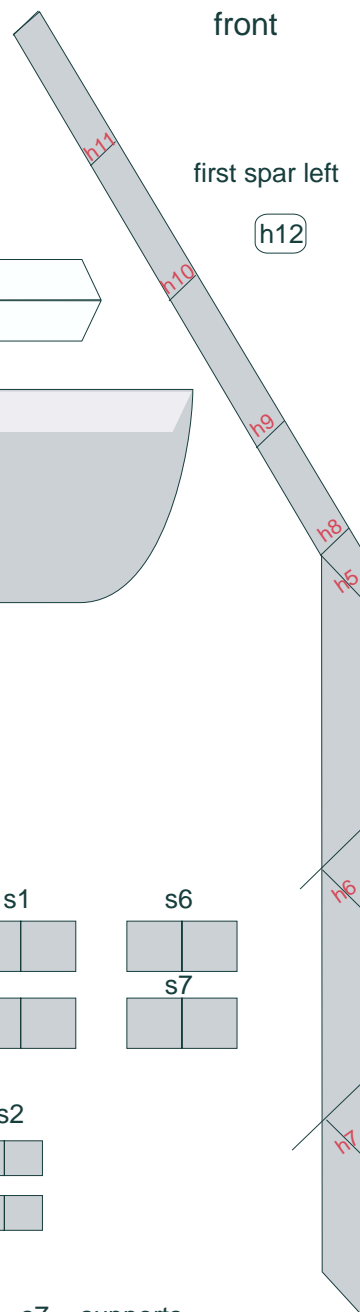
h14



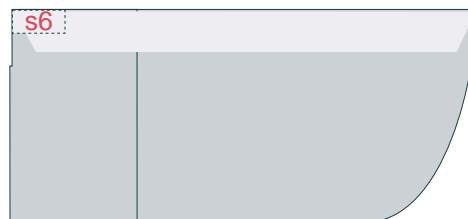
front

first spar left

h12

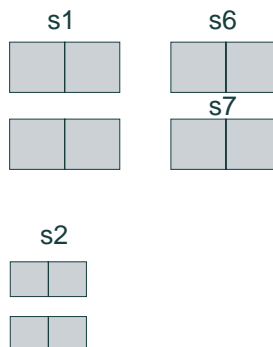
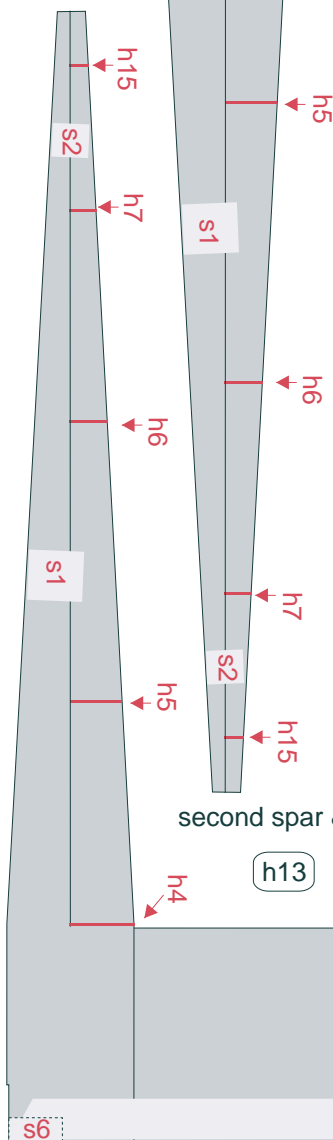


cut 0,3 mm width



second spar & frame

h13



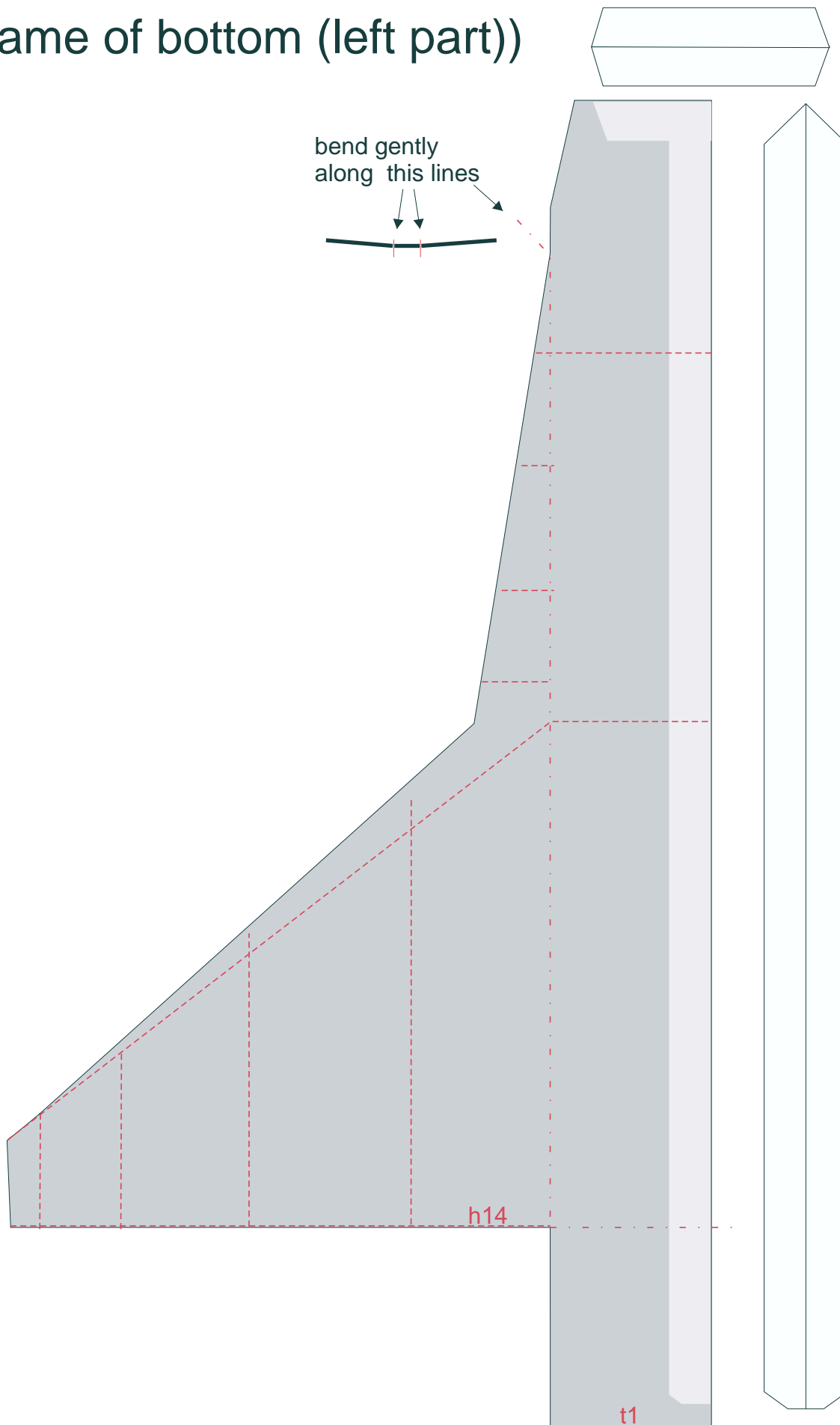
s1 - s7 - supports



10 cm

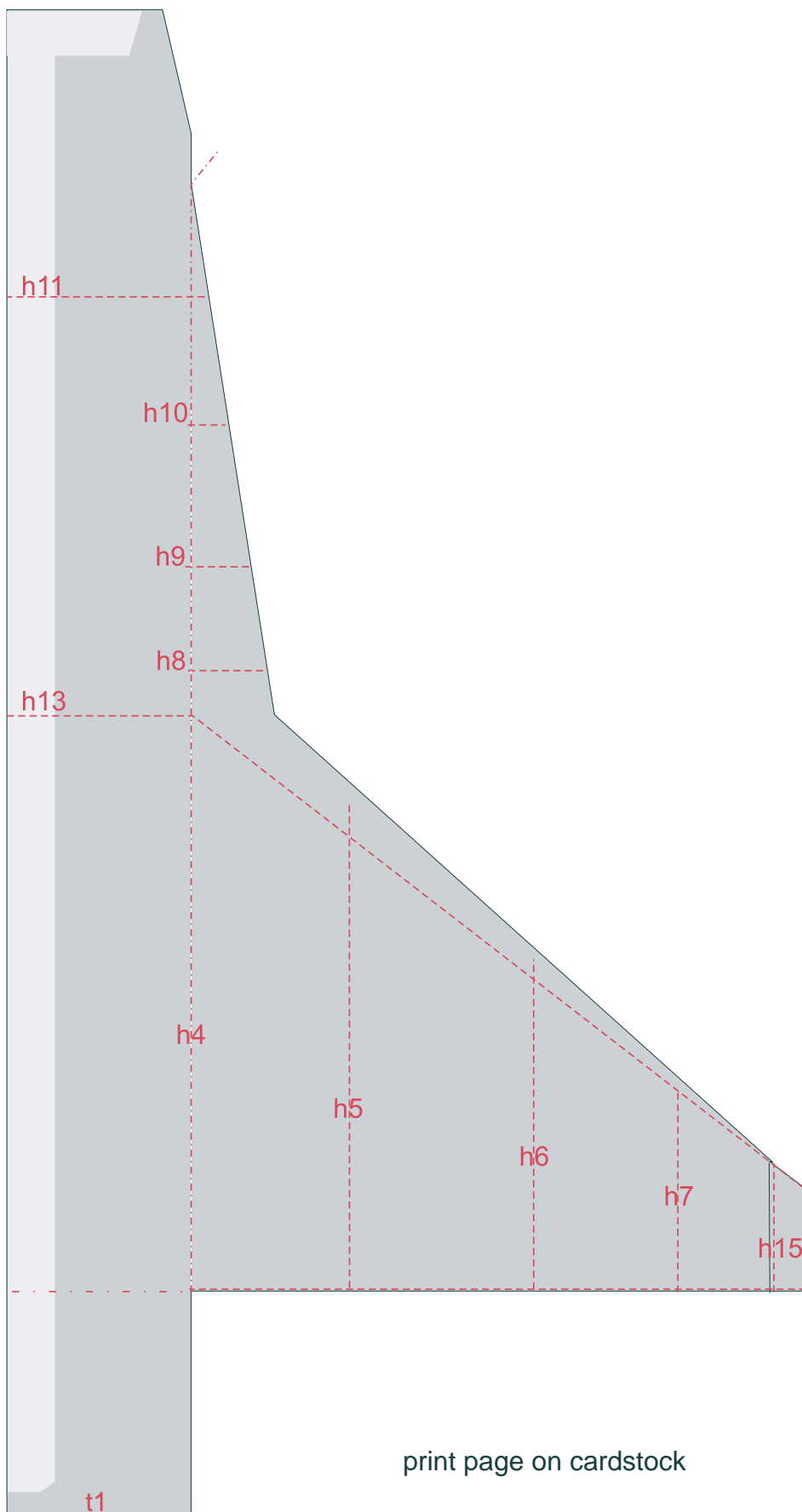
# frame of bottom (left part))

bend gently  
along this lines



10 cm

# frame of bottom (right part))



bend gently  
along this line →  
(after glueing  
of left & right  
parts)

print page on cardstock





# cockpit

new

old

c3

c2

c1

c4

c4

\*spare

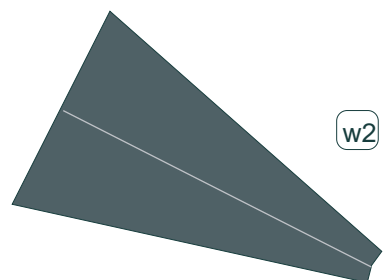
connector c1 - c2

first glue c1,  
then glue c4 on c1,  
then glue connector c1 - c2



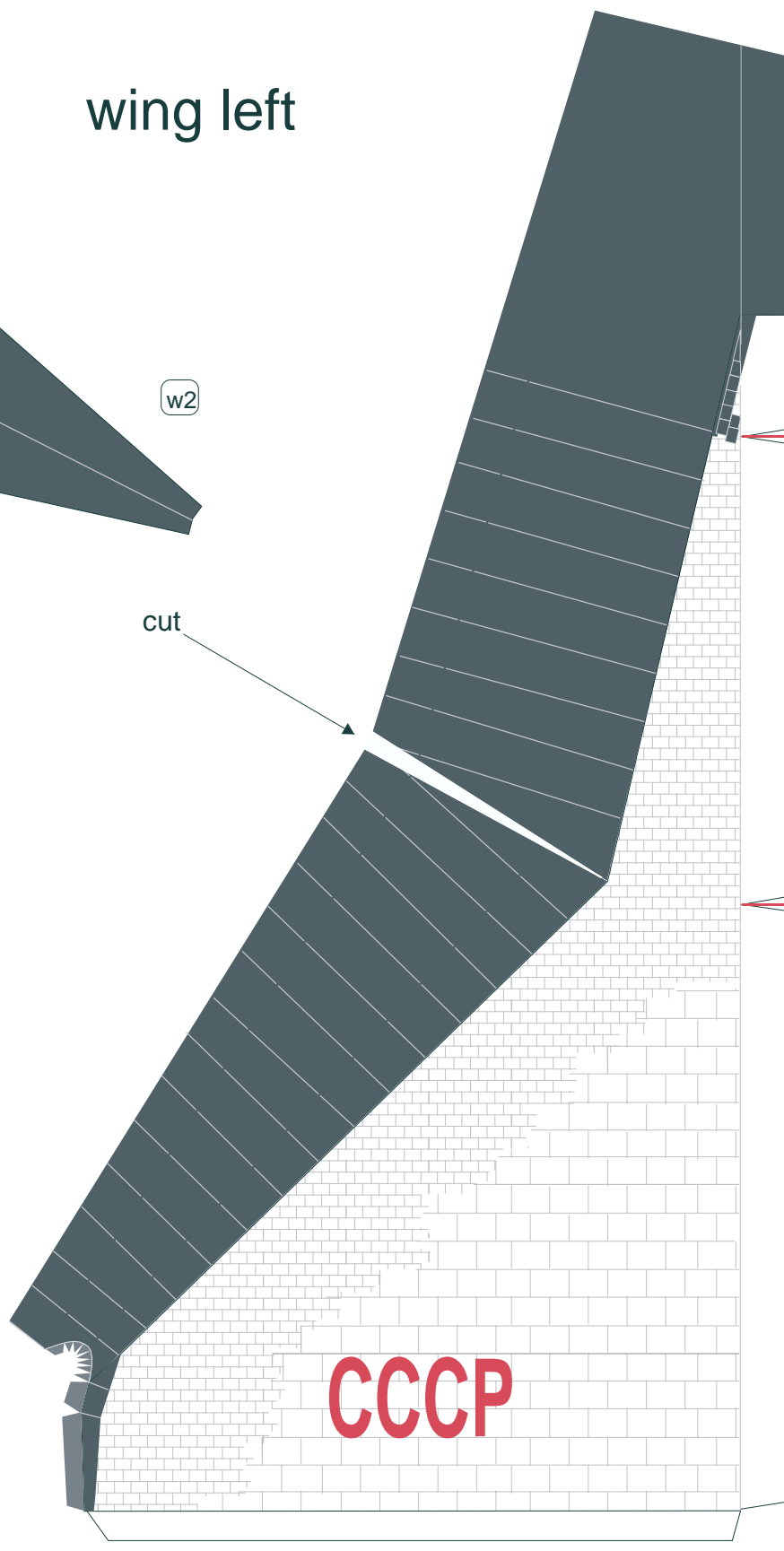


wing left



w2

cut



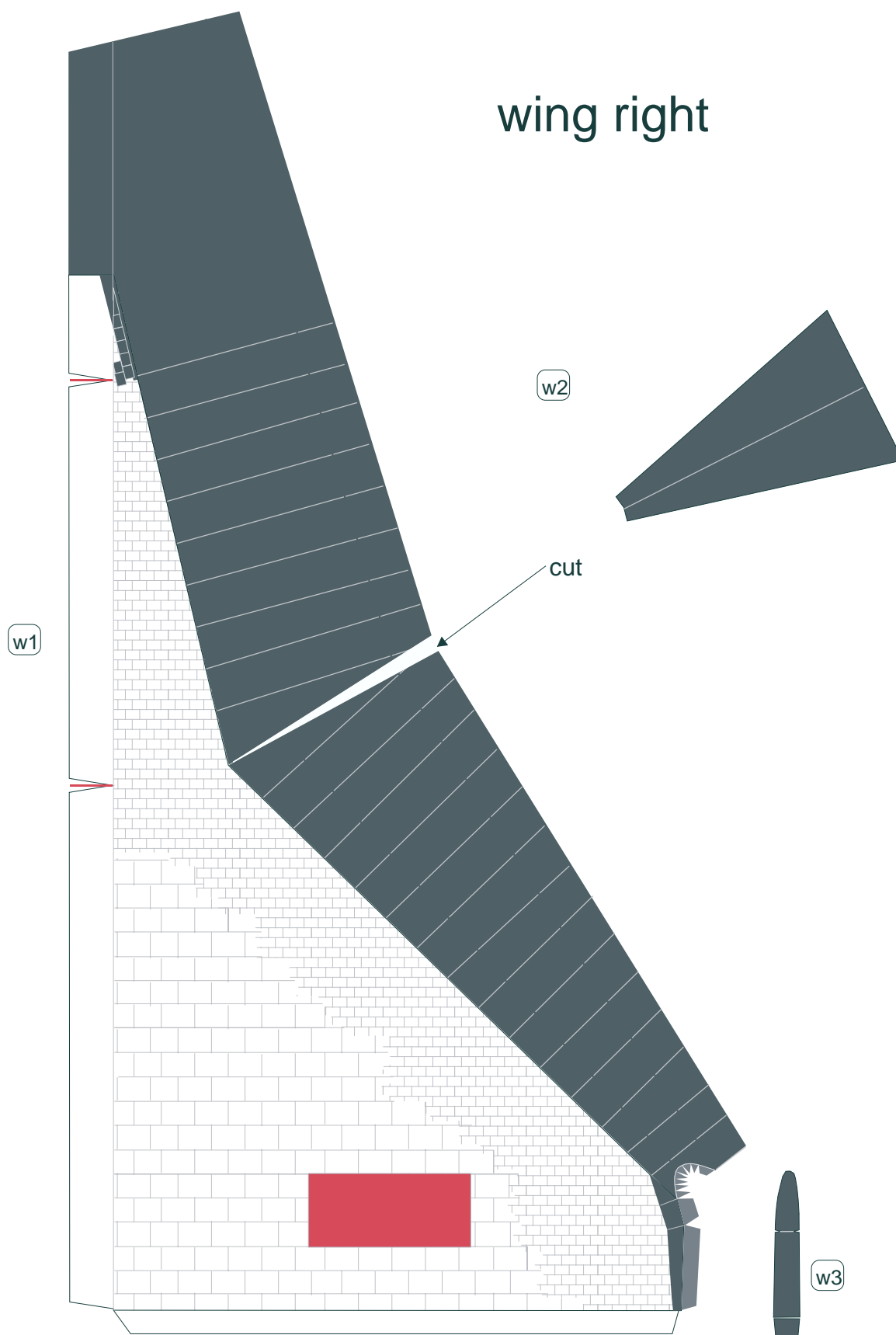
w1

w3



СССР

10 cm



10 cm

# elevones

left

w7

glue onto cardstock

w5

w6

balancer

t10

w4

w7

glue onto cardstock

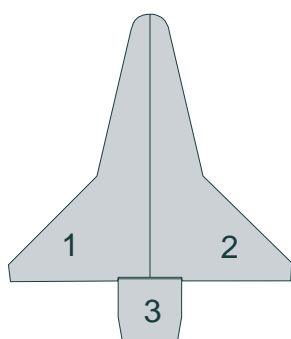
right

w5

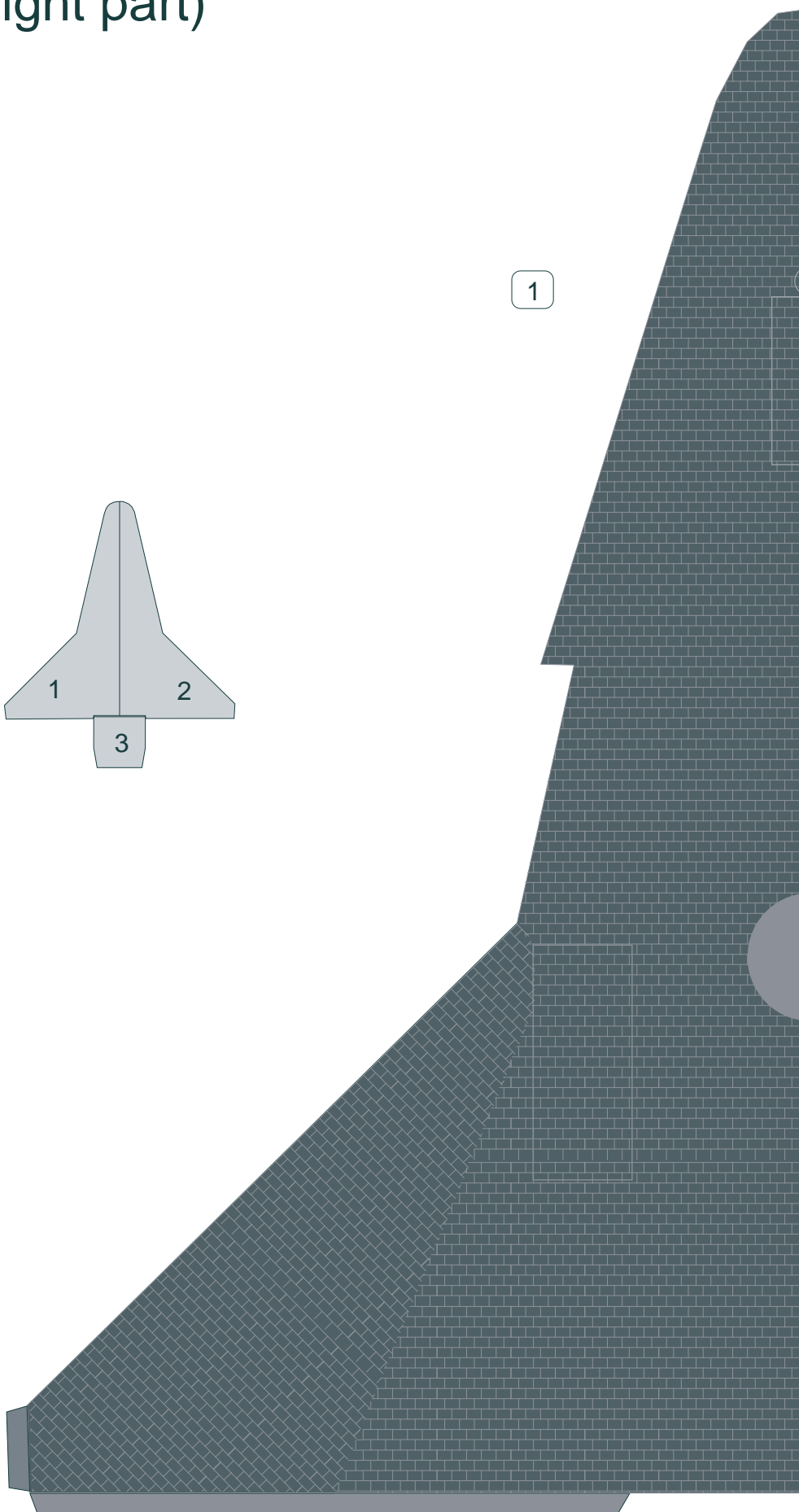
w4

10 cm

# bottom (right part)



1



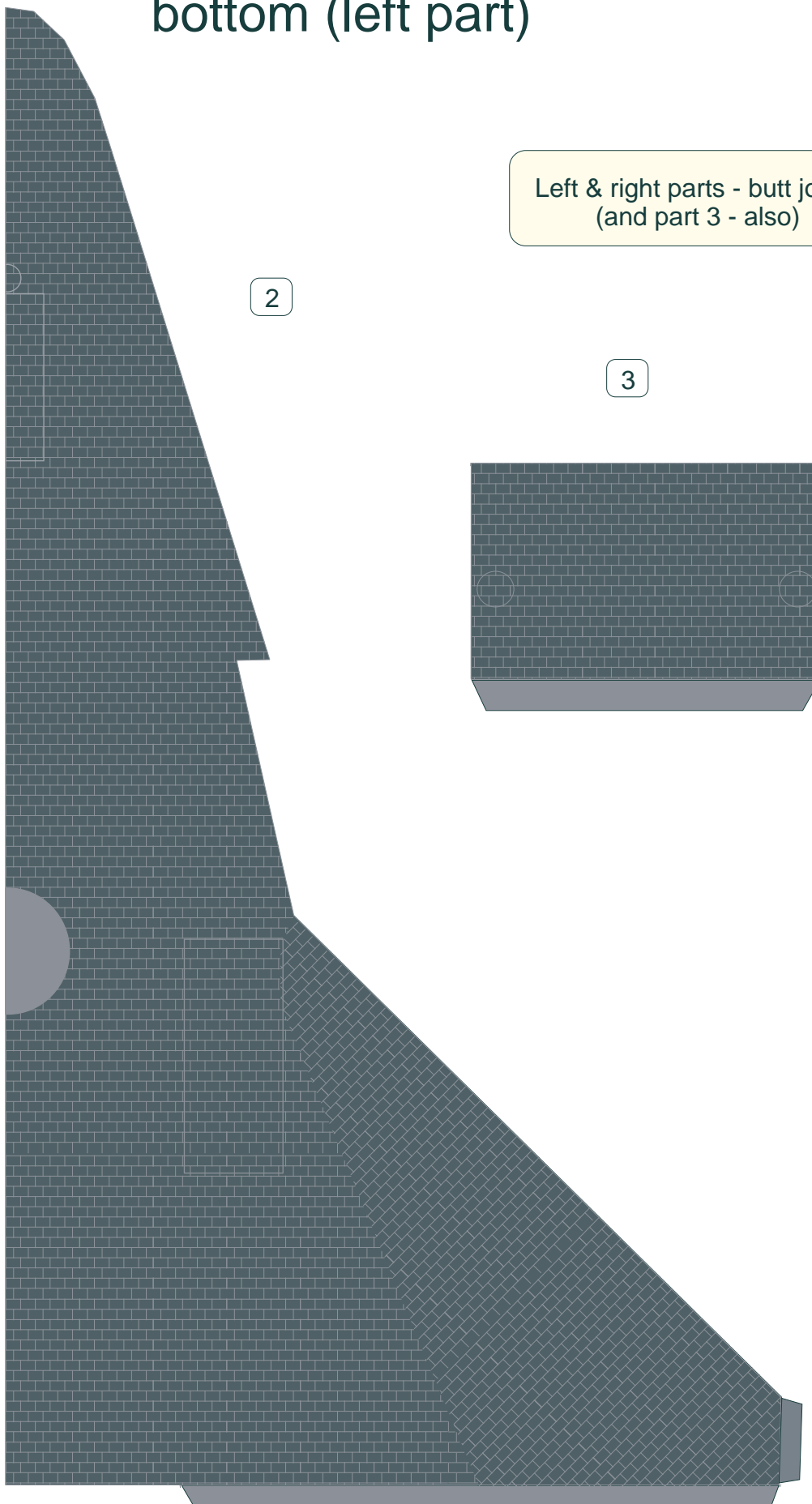
10 cm

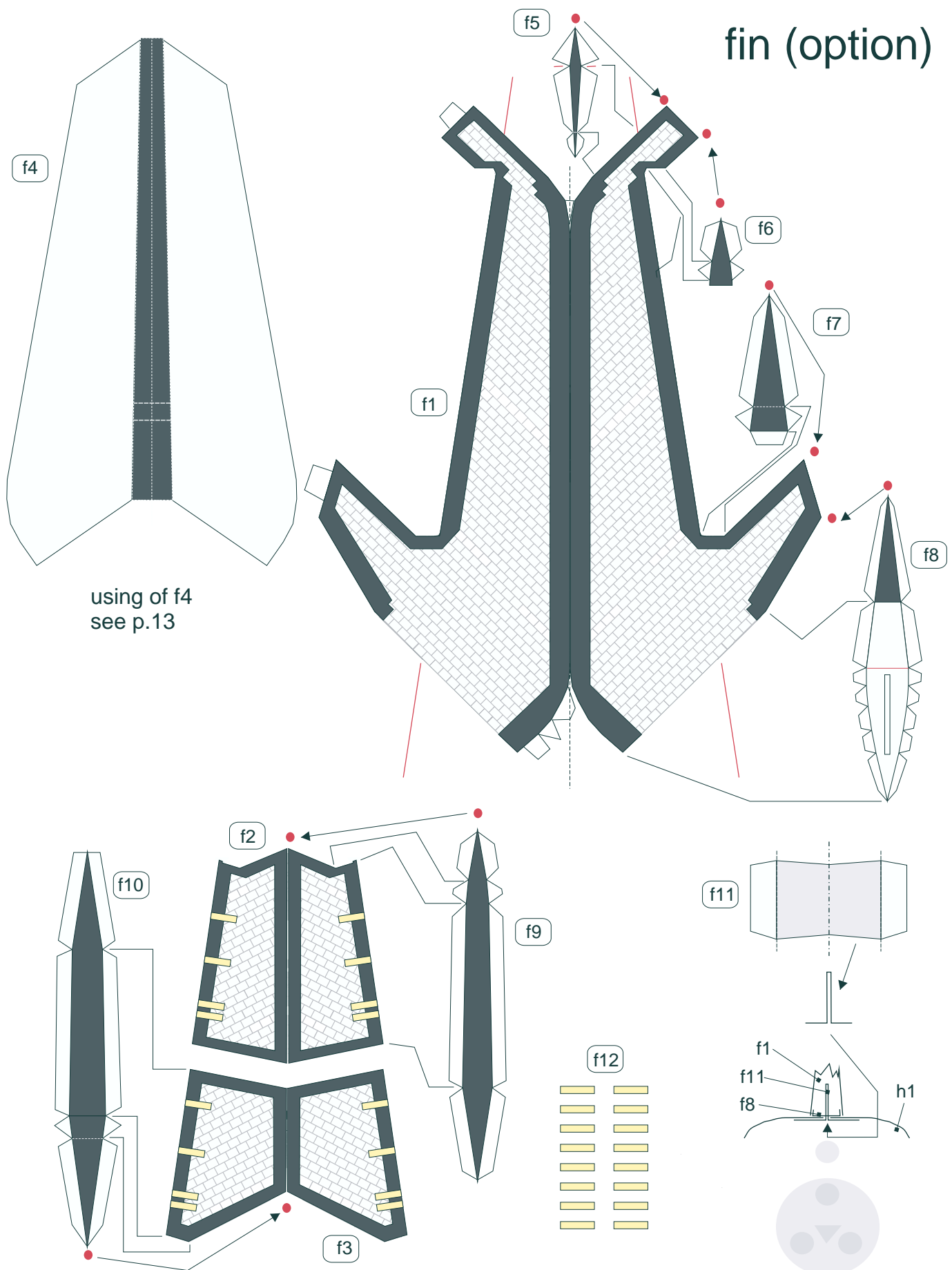
## bottom (left part)

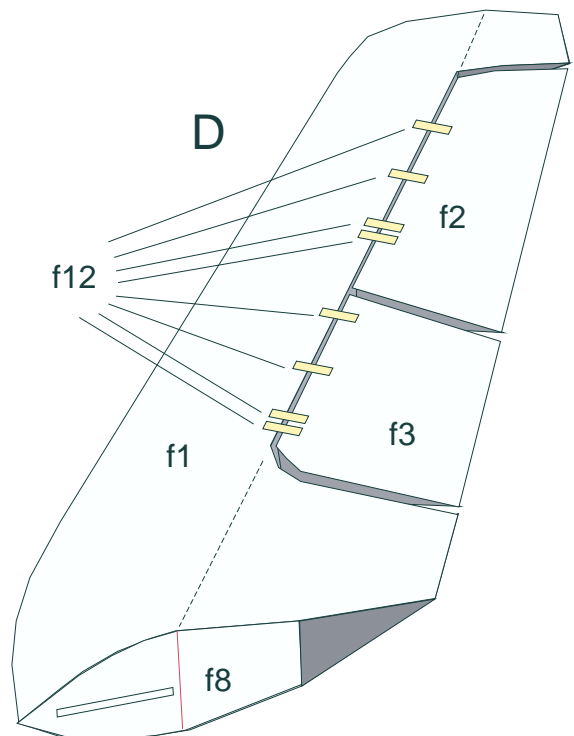
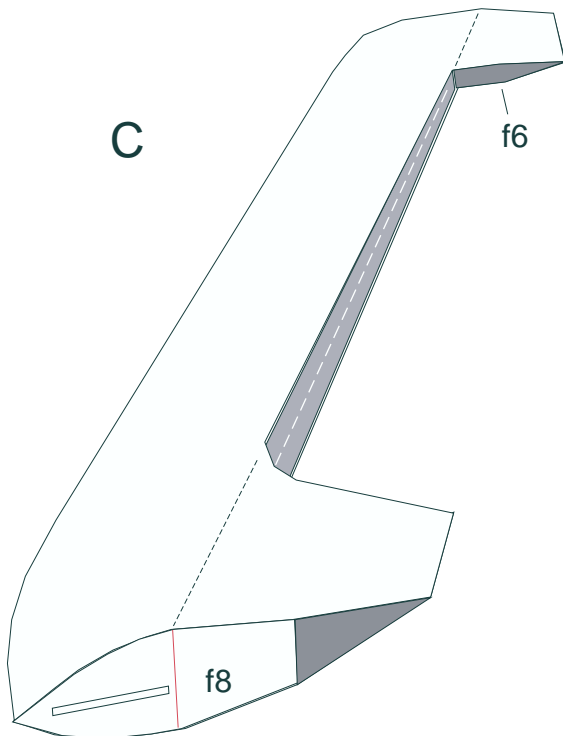
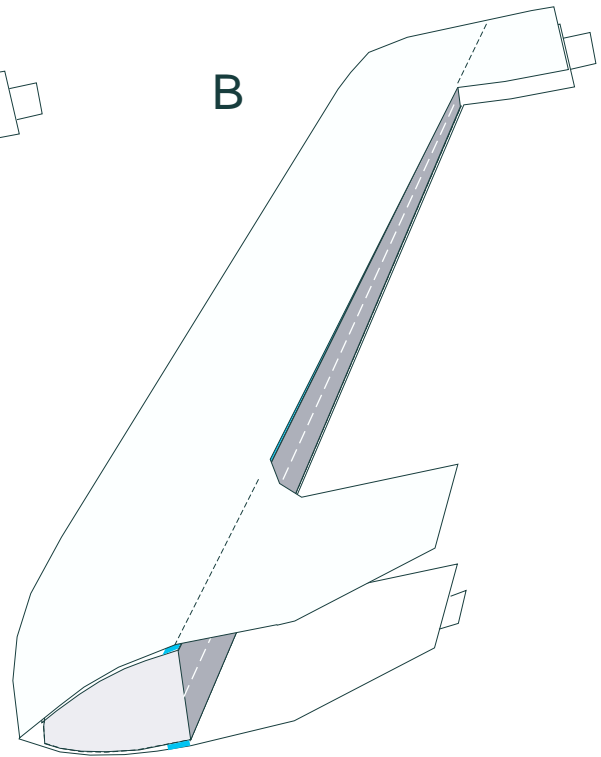
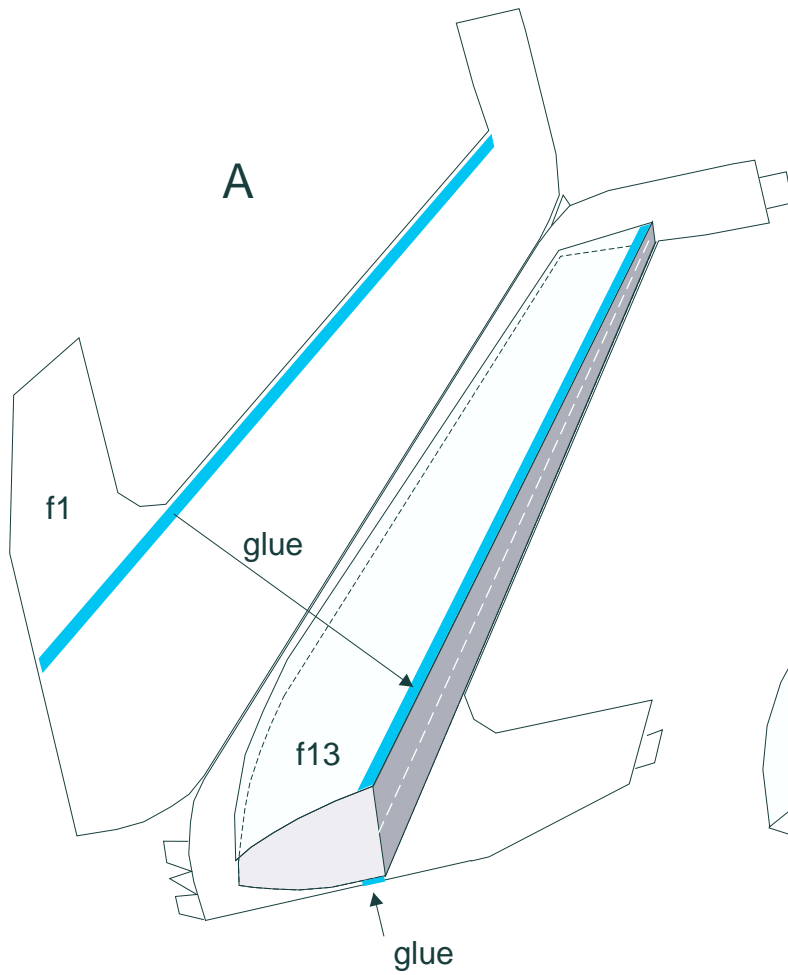
Left & right parts - butt joint !  
(and part 3 - also)

2

3

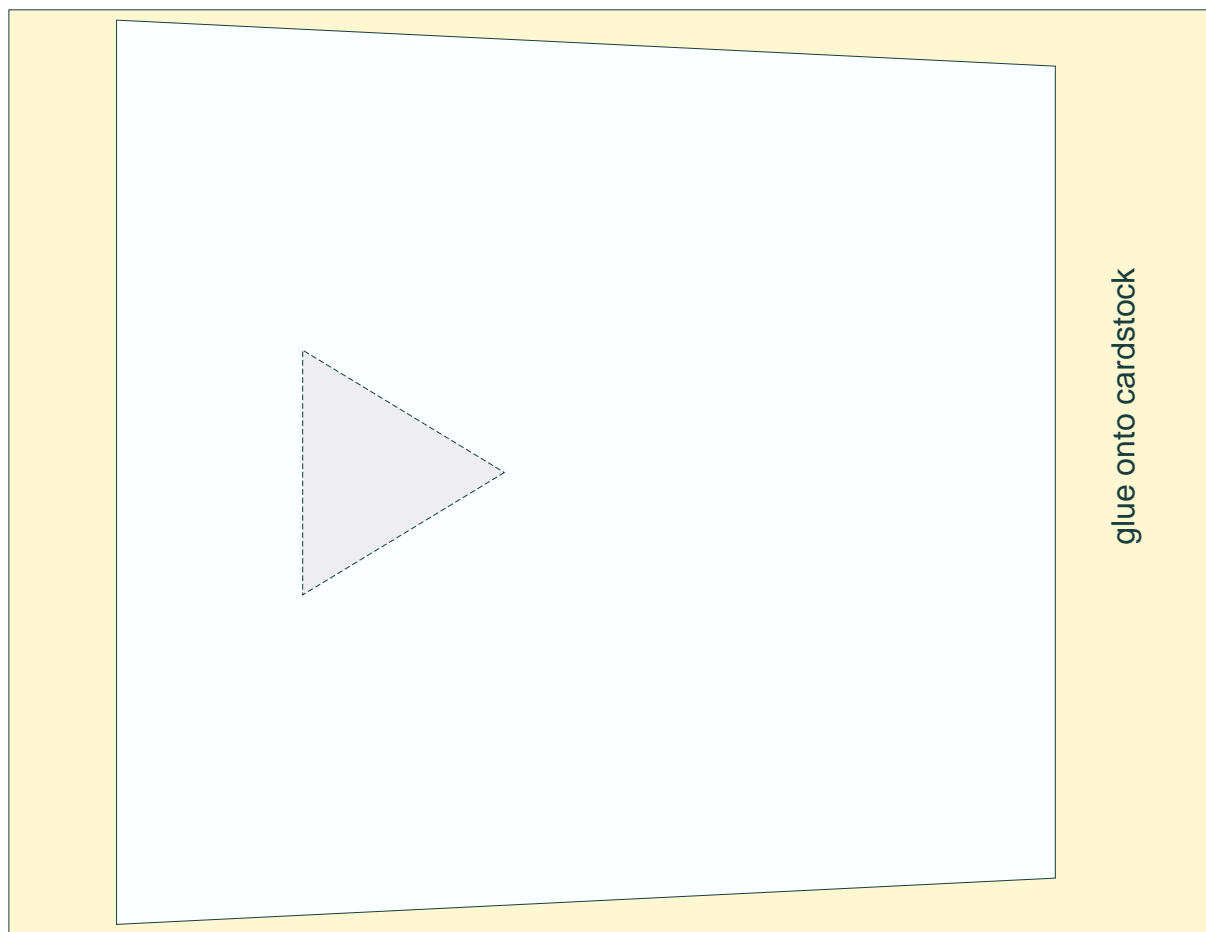






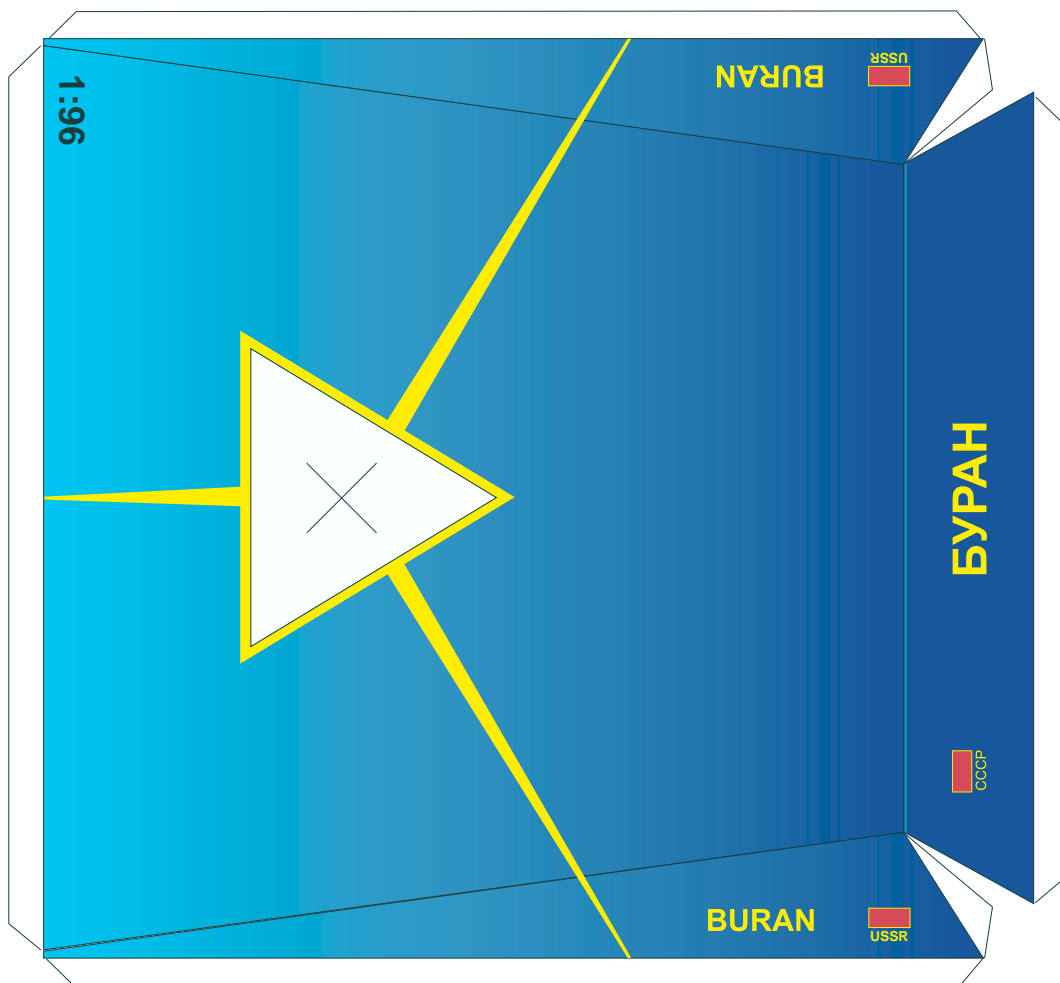


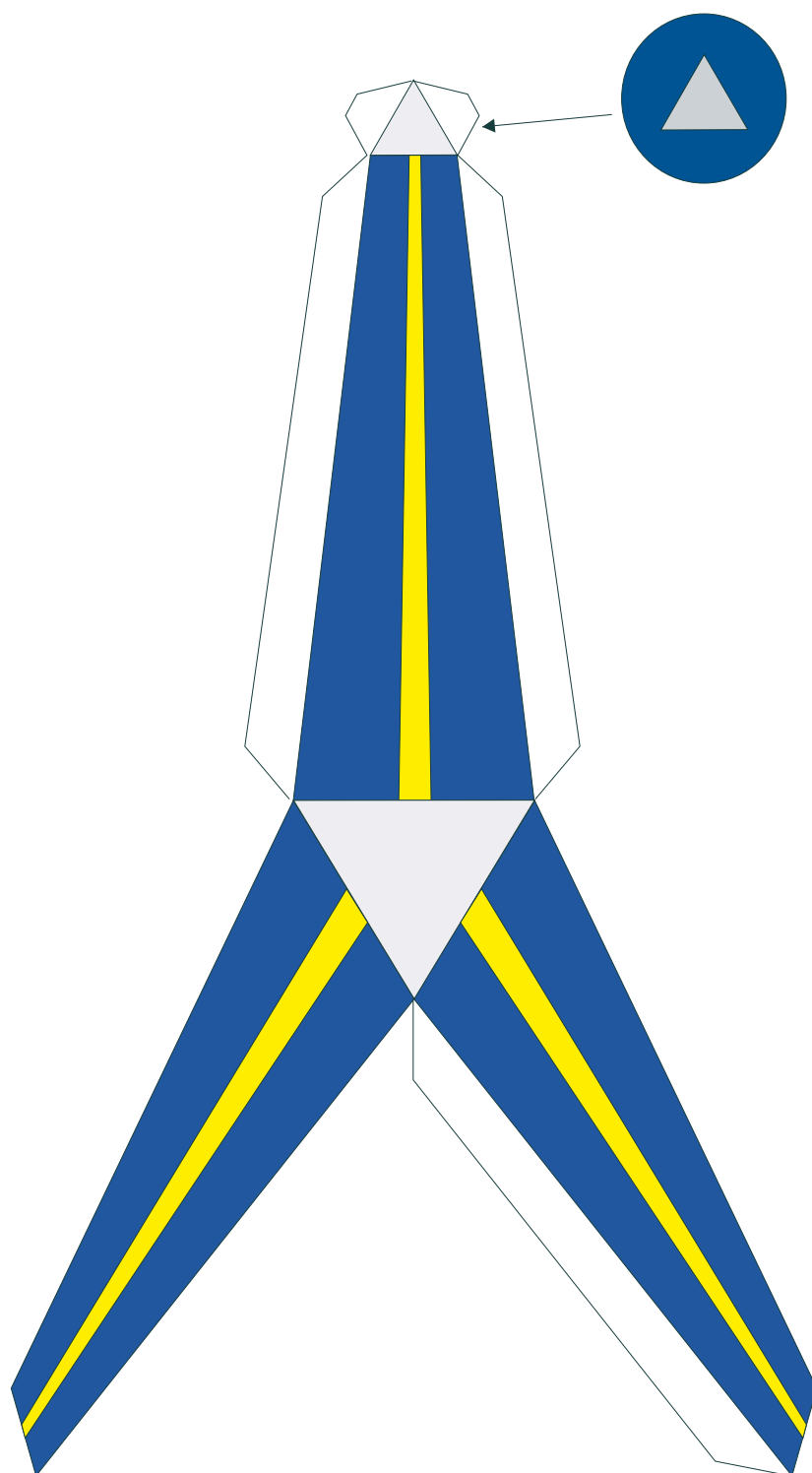
10 cm



“arrow” from next page  
glue onto detail A  
(see grey triangle)

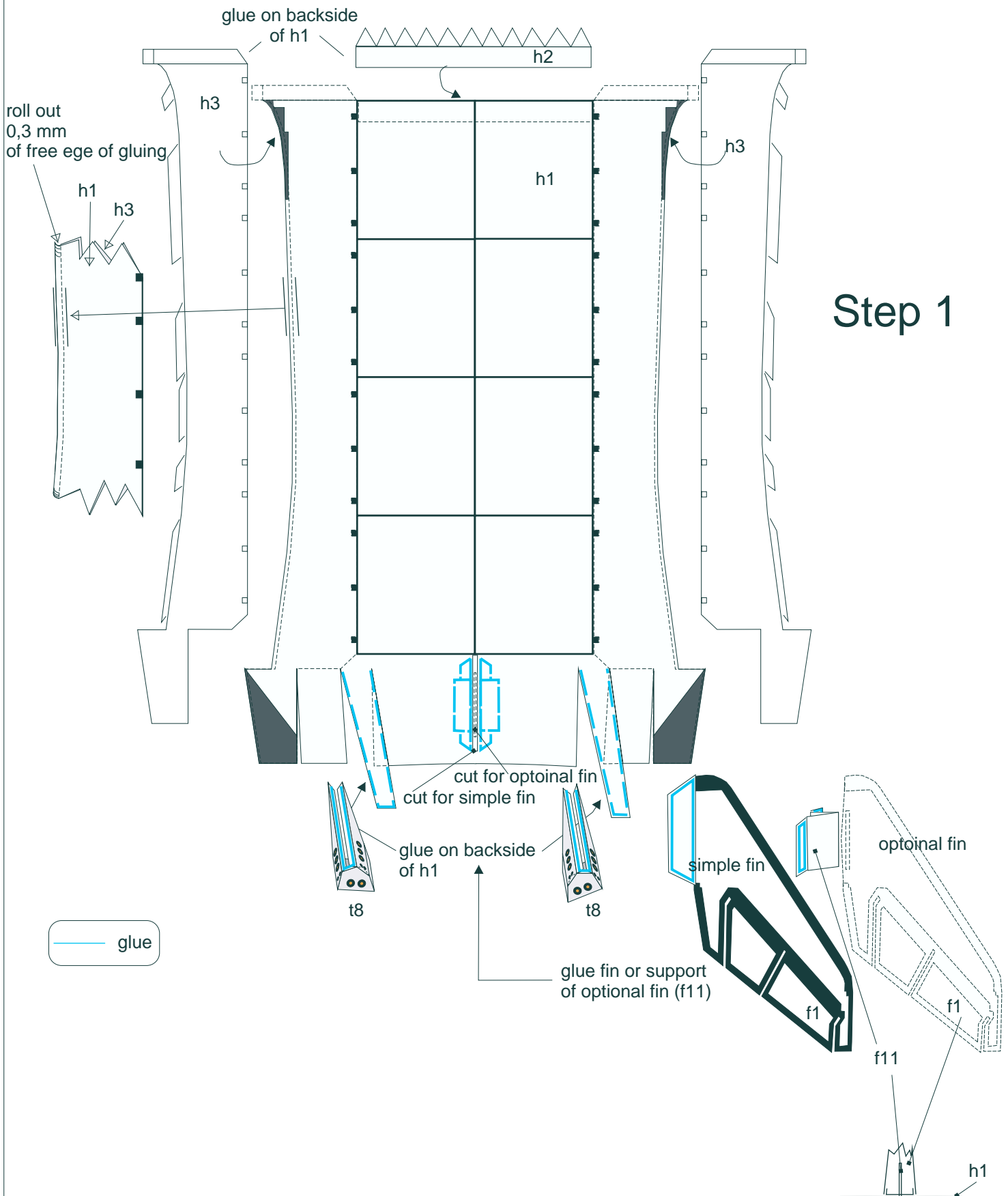
then assembly  
detail B (“arrow” pass  
through triangle hole)





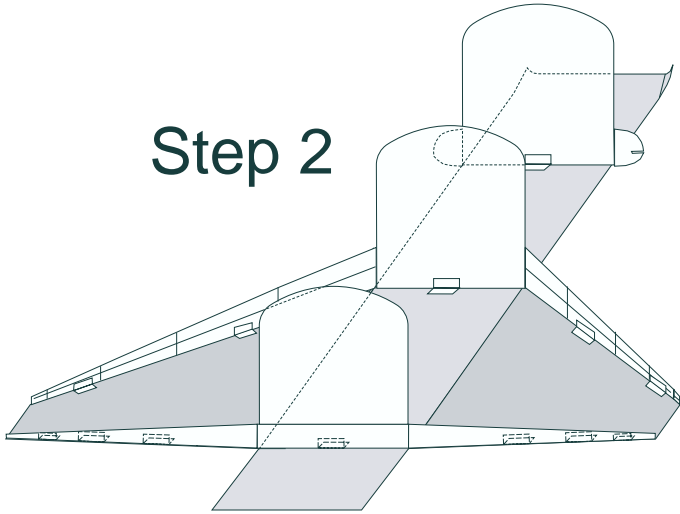
Print on cardstock

# Steps of assembling

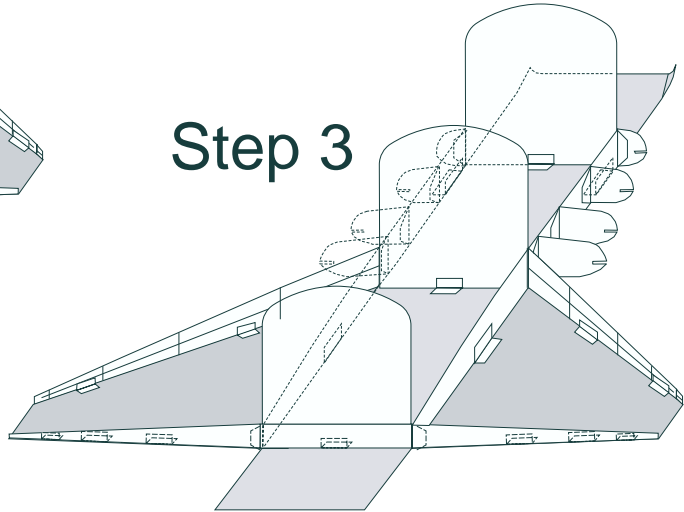


# Steps of assembling

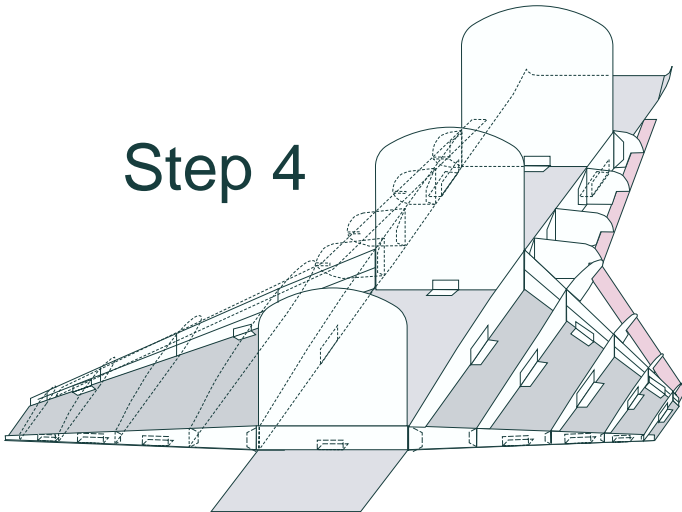
Step 2



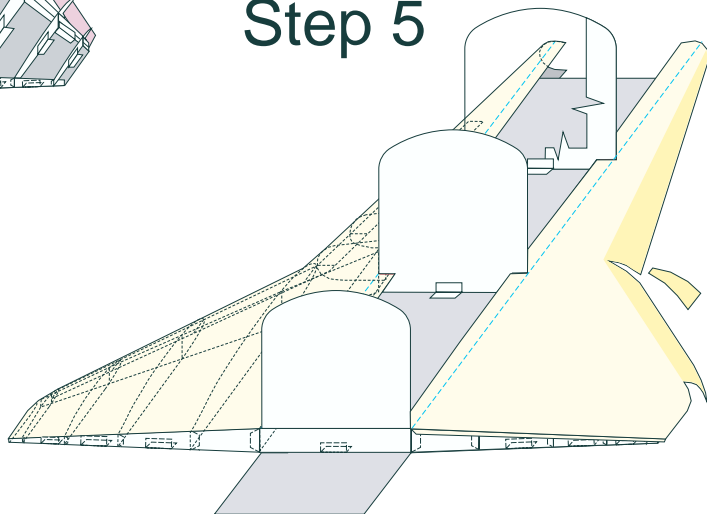
Step 3



Step 4



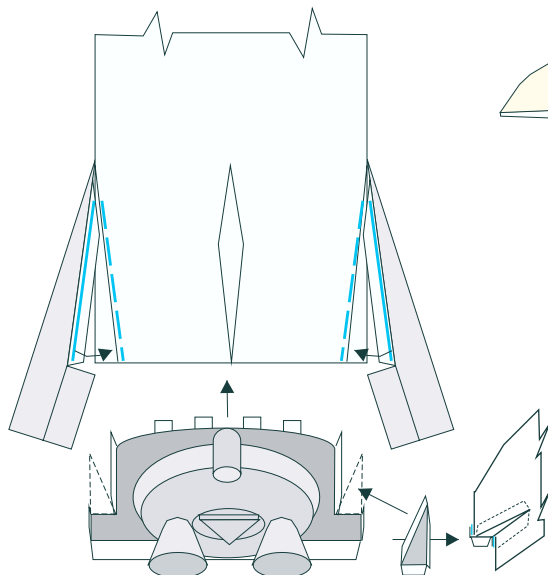
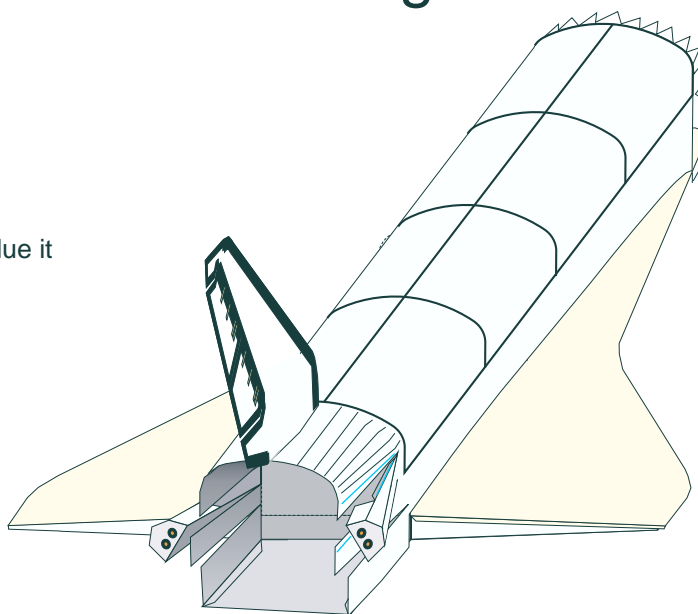
Step 5



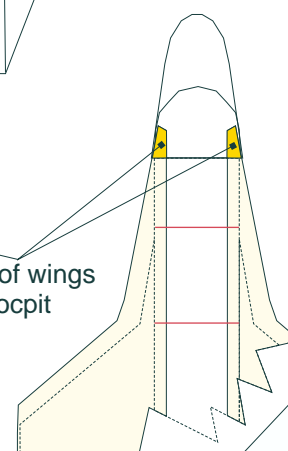
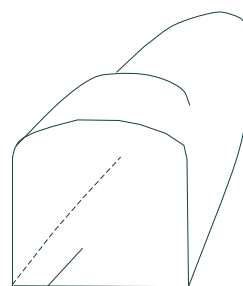
## Steps of assembling

## Step 6

- 1- band h1 conformally to parts h13 & h14 on frame and glue it
- 2- glue pod of mine engines
- 3- glue left & right pods



## Step 7



these parts of wings  
are inside cocpit

