

Science Focus

FEED YOUR MIND

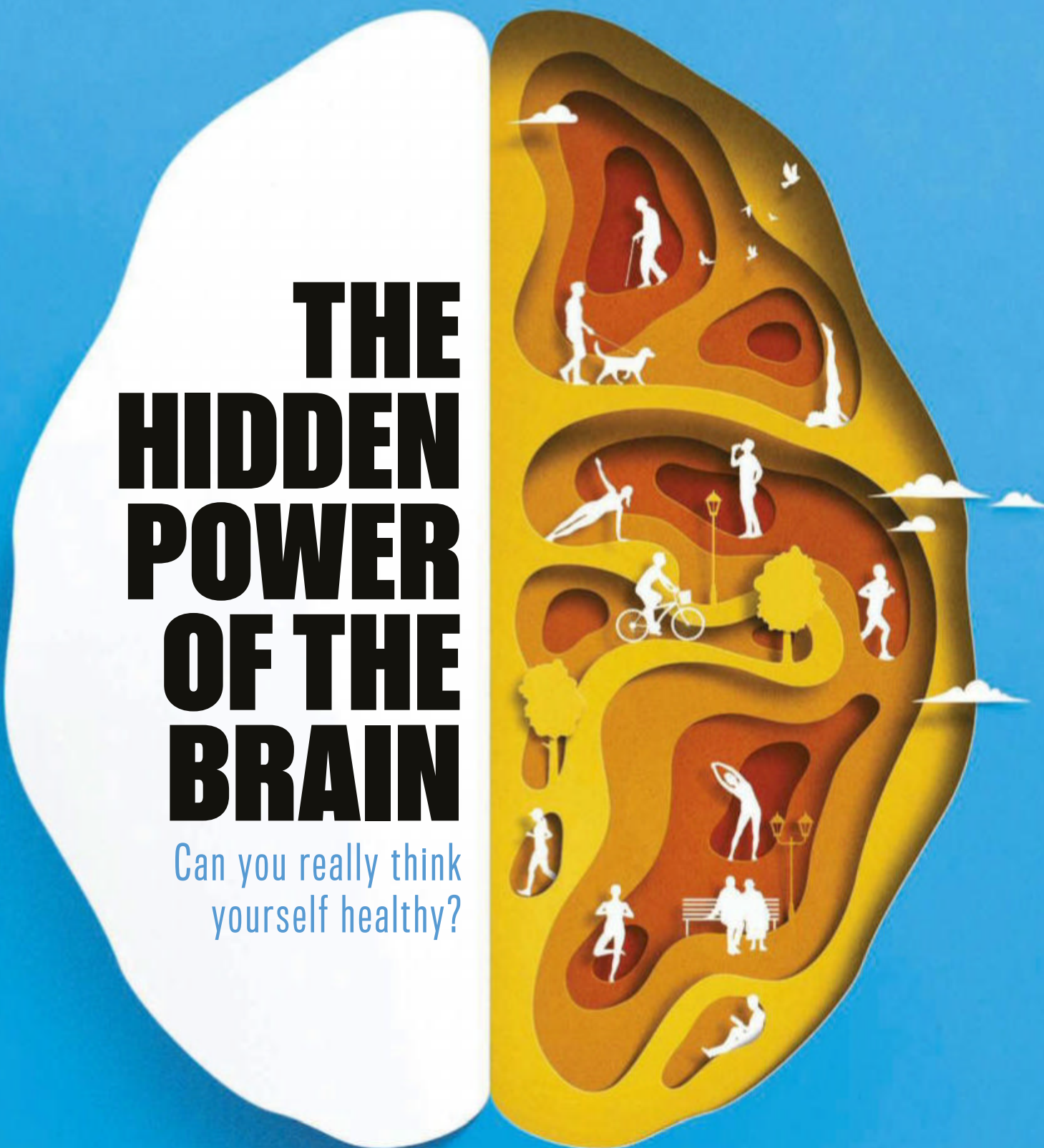
The hunt for the
UNIVERSE'S FIRST GALAXIES

How to deal with
AIR POLLUTION

The value of
PLAYING VIDEO GAMES

THE HIDDEN POWER OF THE BRAIN

Can you really think
yourself healthy?



IN THIS ISSUE

Chris Packham

"I need to scientifically analyse Trump"

Productivity

The argument for a four-day working week

5G

What it is and how it'll shape tech in 2019

Microbiome

Why scientists are looking for super-poopers

Engineering

The tech inside mega moving machines

In numbers

3.8 years

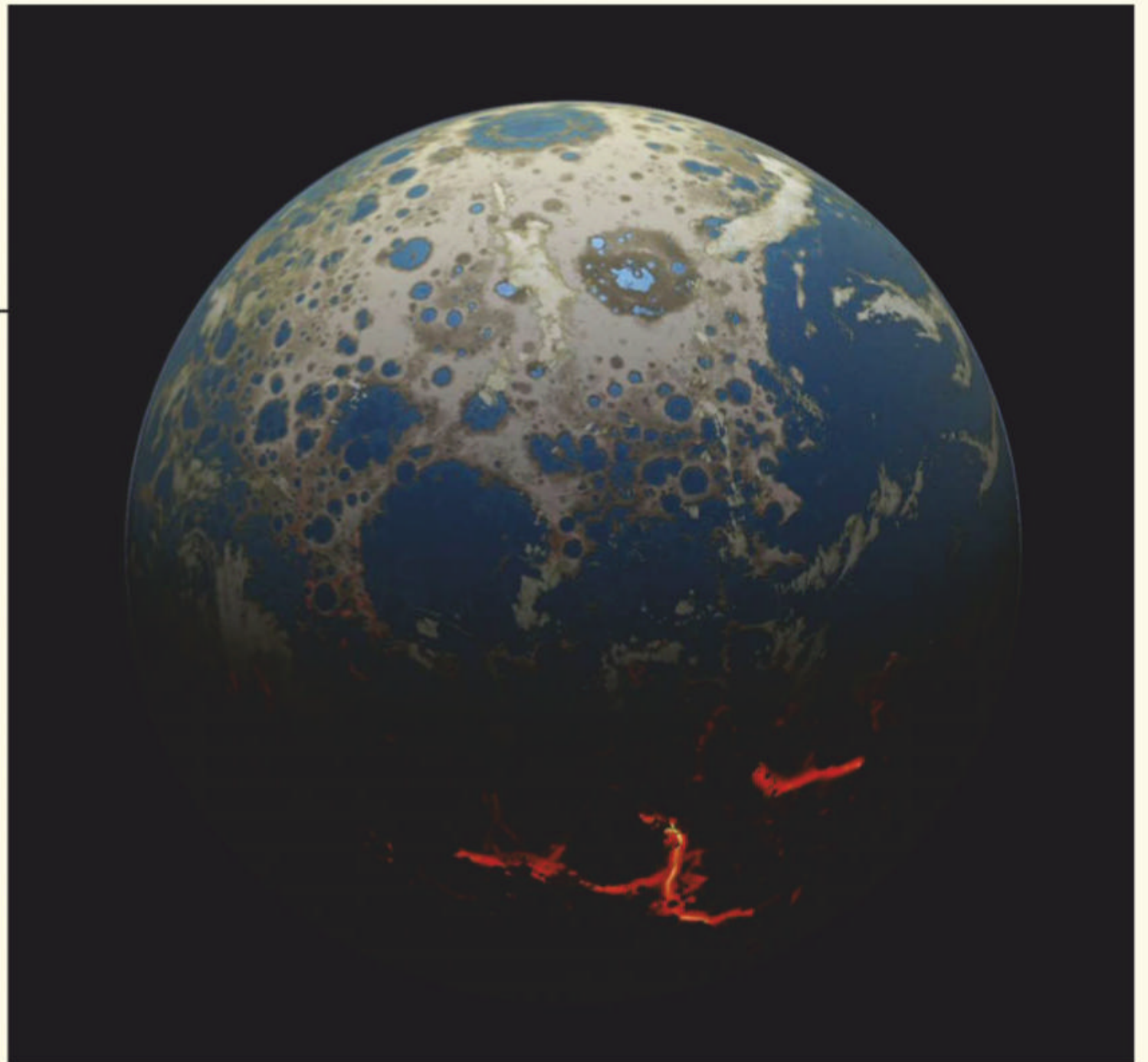
The metabolic age that a woman's brain appears to be younger than a man's of the same chronological age, according to a study at Washington University. It could explain why women tend to stay mentally sharp longer than men.

99.99%

The percentage of bacteria killed in 10 litres of water by a new purification material. When exposed to light, the substance releases oxygen-based chemicals that destroy microbes.

10 hours, 33 minutes and 38 seconds

The length of a day on Saturn, as determined using data recorded by NASA's Cassini probe.



SPACE

Ancient Earth rock discovered on Moon

A rock that may be one of the oldest known to have originated on Earth has been found in a hoard of samples brought back from the Moon by the Apollo 14 astronauts in 1971.

It is thought that the rock formed about 20km beneath the Earth's crust, before being launched into space after a large asteroid or comet slammed into the planet's surface about four billion years ago. It then travelled through the Earth's primitive atmosphere before crash landing on the Moon, which was three times closer to the Earth than it is today, and got mixed with material on the lunar surface as it was bombarded with other hurtling space rocks.

The 2g fragment contains quartz, feldspar,

and zircon – all minerals rarely found on the Moon, but common on Earth – and was identified by an international team of scientists based at the Center for Lunar Science and Exploration (CLSE).

“It is an extraordinary find that helps paint a better picture of early Earth and the bombardment that modified our planet during the dawn of life,” said principal investigator Dr David Kring.

The researchers note that their discovery is likely to be controversial in some corners of the geology community as it is the first finding of its kind, but they are hopeful that the results will be confirmed when further similar samples are found in future studies.

Earth looked much different when the ancient rock fragment formed